

DATE: February 10, 2015

TO: Board of Education

FROM: VOLUME – Voices of Lucia Mar for Education
Stacy Meko, Steering Committee Member

SUBJECT: Proposal to Request Rearrangement of LMUSD Trustee Areas - Amended

Background:

The Lucia Mar Unified School District is divided into four trustee areas that were established in 1966 upon the founding of the school district. The number of trustees representing each area was based on the population at that time and has not been reviewed or revised since 1966. The area has experienced tremendous growth over the past five decades. Per the U.S. census, Arroyo Grande’s population increased 131% from 1970 to 2010. The most significant growth has occurred in Nipomo where the population increased 359% between 1970 and 2010. According to 2013-14 CBEDs enrollment data, 31% of Lucia Mar students attend Nipomo schools and 65% attend Five Cities schools.

LUCIA MAR UNIFIED SCHOOL DISTRICT
ENROLLMENT BY SCHOOL (October 2014 1st Interim Budget Report)

5 CITIES SCHOOLS	ENROLLMENT	NIPOMO SCHOOLS	ENROLLMENT	DISTRICT-WIDE SCHOOLS	ENROLLMENT	TOTAL
Branch	330	Dana	611	CC New Tech	277	
Grover Beach	487	Nipomo	469	Lopez	132	
Grover Heights	445	Lange	564			
Harloe	660	Mesa	527			
Fairgrove	480	Nipomo H.S.	1,002			
Oceano	441					
Ocean View	615					
Shell Beach	433					
Judkins	427					
Paulding	605					
Arroyo Grande HS	2,184					
TOTAL	7,107		3,173		409	10,689
% Total Enrollment	66%		30%		4%	

Population data by trustee area was not readily attainable, so data from the San Luis Obispo County Clerk Recorders office representing the number of registered voters per trustee area is used here for comparison purposes. (On average, 65% of the population nationwide is registered to vote.)

LUCIA MAR UNIFIED SCHOOL DISTRICT
 NUMBER OF REGISTERED VOTERS PER TRUSTEE AREA

Trustee Area	Coverage	# of Registered Voters	% of District	# of Trustees	% of Board	# Voters per Trustee
1	Nipomo	10,717	24.6%	1	14%	10,717
2	Arroyo Grande, Huasna, parts of Oceano	17,670	40.5%	3	43%	5,890
3	Oceano	4,473	10.3%	1	14%	4,473
4	Pismo Beach, Shell Beach, Grover Beach	10,723	24.6%	2	29%	5,361
TOTAL		43,583		7		

Based on SLO County Clerk Recorders Office, Report of Registration 10/23/2014

There is currently a great disparity in the number of constituents (registered voters) served by each trustee, ranging from 4,473 to 10,717. Additionally, the percentage of representation on the board for each trustee area is disproportionate to the population of its trustee area.

The California Ed Code 5019.5 prescribes a review of trustee areas following each decennial federal census. While this does not apply to LMUSD because trustees are voted at large (all voters elect trustees from all four areas), it does illustrate the state’s intent that trustee areas should be updated regularly and accurately reflect the district’s population.

Procedure to Request Rearrangement of Trustee Areas:

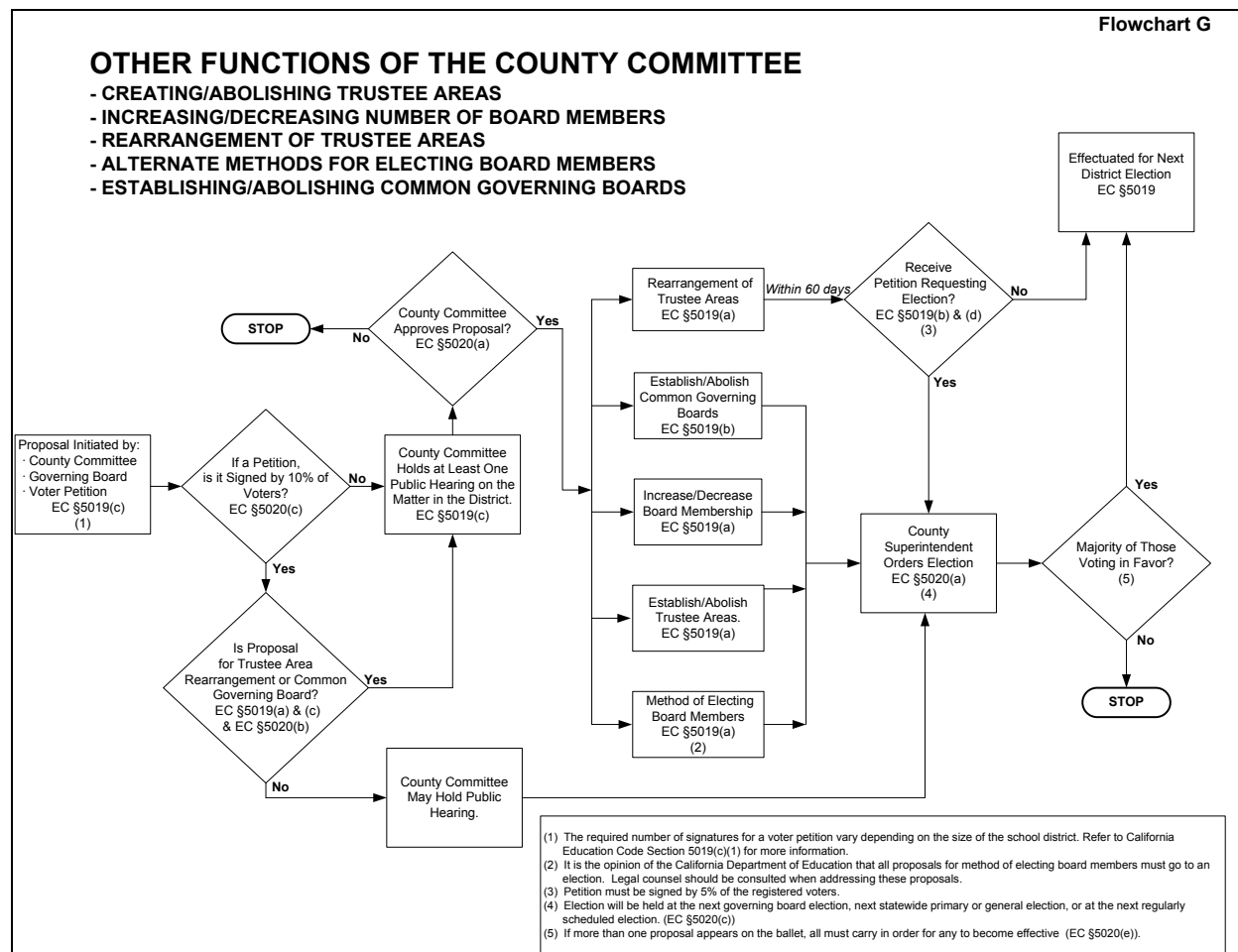
The rearrangement of trustee areas is governed by the County Committee on School District Organization at the San Luis Obispo County Office of Education as outlined in the California Education Code 5019. A proposal to examine the arrangement of trustee areas can be made in one of three ways:

1. By the SLO County Committee on School District Organization itself.
2. By a petition of registered voters, which for a district the size of Lucia Mar would require 250 signatures.
3. By the LMUSD Board of Education.

VOLUME proposes that the Lucia Mar Board of Education make this request to the County Committee. It is our perception that this would be the best way to engage all stakeholders from the district and the community to work collaboratively on a rearrangement solution.

Once the request for rearrangement of trustee areas goes to the County Committee on School District Organization, the committee must hold at least one public hearing. If the County Committee approves the proposal, there is a 60-day period during which the proposal may be challenged by a petition of 5% of registered voters in the district (approximately 2,200 signatures). If there is no challenge, the rearrangement of trustee areas will take effect with the next school board elections.

In the event of a challenge/petition, the rearrangement proposal will be put to the voters in the next election. If approved, rearrangement would take effect with the next school board elections. If defeated, no rearrangement would take place.



Recommendation:

In light of the extraordinarily long period of time since the last evaluation of trustee areas and the inequities in representation, VOLUME urges the board of education to undertake a request to the County Office of Education for a rearrangement of LMUSD trustee areas. It would be the job of the committee charged with rearrangement to determine how best to

balance the trustee areas (relocating boundaries, reassigning trustees, etc.) and may require the services of a consultant or attorney. Anomalies in the current trustee boundaries (e.g. some Oceano addresses are assigned to Trustee Area 2 with Arroyo Grande) could also be addressed.